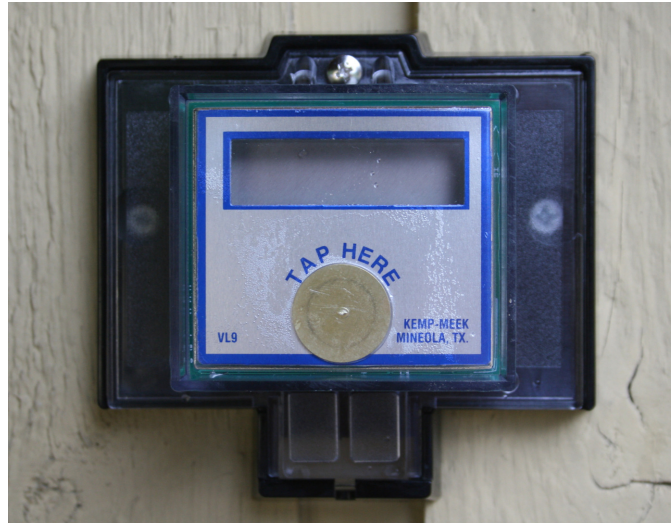


# VL9

## REMOTE READER FOR WATER METERS

---



### FEATURES:

- ◆ Environmentally sealed
- ◆ Connects to Meter M.I.U.
- ◆ Large easy to read DISPLAY
- ◆ “TAP” switch to get current meter reading
- ◆ 8 digit meter readings
- ◆ 12 digit meter ID
- ◆ Alpha numeric
- ◆ 5 year limited warranty
- ◆ Solution for confined space meters
- ◆ Convenient cost effective solution to inaccessible meters, i.e., Shopping Malls, etc.
- ◆ Distances to 500 feet or more

### METER CONNECTIVITY:

- ◆ Sensus
- ◆ Invensys
- ◆ Neptune
- ◆ Amco/Kent
- ◆ Schlumberger
- ◆ Badger ADE
- ◆ Neptune Trident
- ◆ Badger model 25 Read-O-matic
- ◆ Any meter with Sensus protocol

### Distributor

**Kemp-Meek MFG. INC.**  
101 Park Central  
Mineola, TX 75773  
903.569.9700  
[www.kempmeek.com](http://www.kempmeek.com)

## PHYSICALS:

4.6" X 4.3" X 2" thick (11.7cm X 10.9cm X 5.1cm thick)

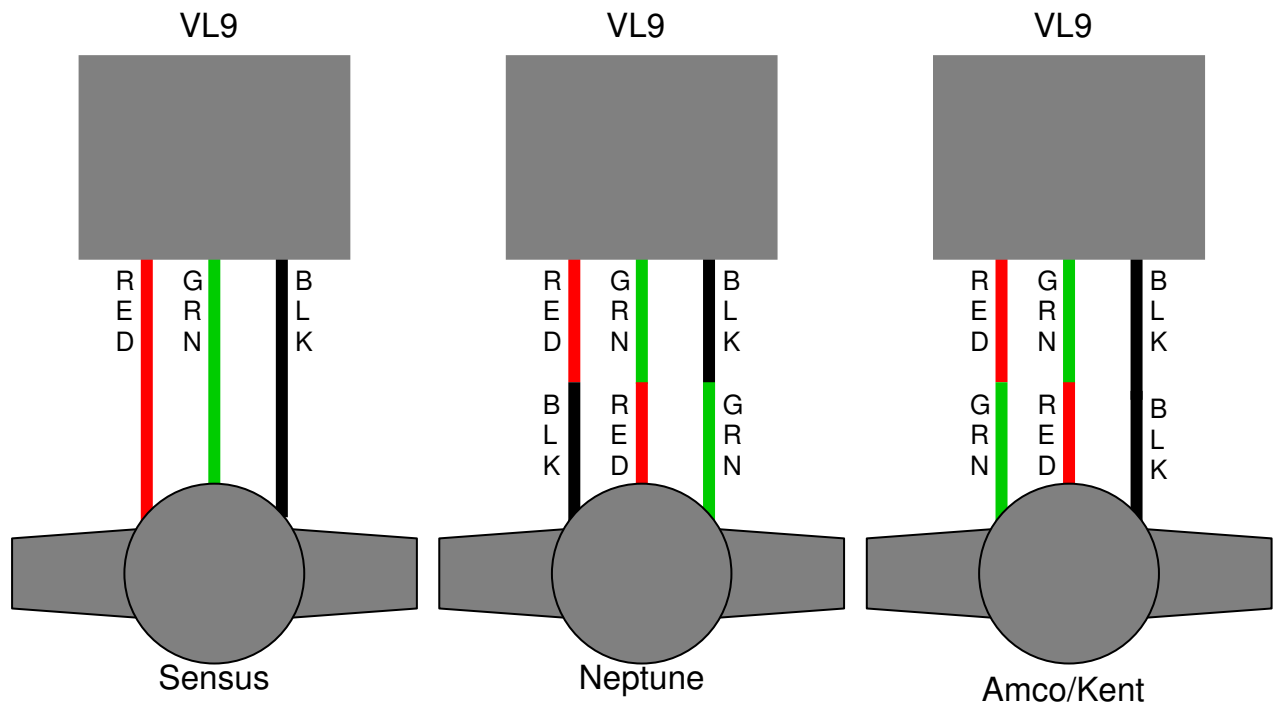
## Operating Temperature:

-30 to 80°C (-22 to 176°F)

## Weight:

9oz (254g)

## INSTALLATION:



## WARRANTY:

This Visu-Link is warranted to be free from manufacturing defects and is subject to replacement in the event of failure five years or less from the date of manufacture. Mis-use, abuse, vandalism, physical damage or acts of God are not covered by this warranty. Expenses incurred due to device failure or expenses related to replacement are not covered. Transportation costs are not covered. Kemp-Meek reserves the right to repair or replace a defective unit and in no case shall the liabilities exceed the unit price. No other warranty is expressed or implied. No modification of this warranty is permitted without the authorized written consent of Kemp-Meek Mfg., Inc. Warranty applies only to original purchaser of this product.

**Kemp-Meek MFG. INC.**  
101 Park Central  
Mineola, TX 75773  
903.569.9700  
[www.kempmeek.com](http://www.kempmeek.com)